

Cynomolgus/Rhesus macaque BAFFR/TNFRSF13C Protein

Cat. No. BAF-CM10R

Description

Source	Recombinant Cynomolgus/Rhesus macaque BAFFR/TNFRSF13C Protein is expressed from HEK293 with His tag at the C-Terminus. It contains Ser7-Ala71.
Accession	XP_065378154.1(Cynomolgus)/XP_001101623.2(Rhesus macaque)
Molecular Weight	The protein has a predicted MW of 7.7 kDa. Due to glycosylation, the protein migrates to 13-25 kDa based on Bis-Tris PAGE result.
Endotoxin	Less than 1EU per µg by the LAL method.
Purity	> 95% as determined by Bis-Tris PAGE

Formulation and Storage

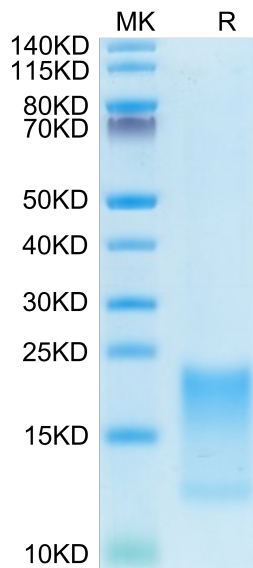
Formulation	Lyophilized from 0.22µm filtered solution in PBS (pH 7.4). Normally 8% trehalose is added as protectant before lyophilization.
Reconstitution	Centrifuge the tube before opening. Reconstituting to a concentration more than 100 µg/ml is recommended. Dissolve the lyophilized protein in distilled water.
Storage	-20 to -80°C for 12 months as supplied from date of receipt. -80°C for 3 months after reconstitution. Recommend to aliquot the protein into smaller quantities for optimal storage. Please minimize freeze-thaw cycles.

Background

BAFF binds to three TNF receptor superfamily members: B-cell maturation antigen (BCMA / TNFRSF17), transmembrane activator and calcium-modulator and cyclophilin ligand interactor (TACI/TNFRSF13B) and BAFF receptor (BAFF R/BR3/TNFRSF13C). These receptors are type III transmembrane proteins that lack a signal peptide. Whereas TACI and BCMA bind BAFF and another TNF superfamily ligand, APRIL (a proliferation-inducing ligand), BAFF R selectively binds BAFF.

Assay Data

Bis-Tris PAGE



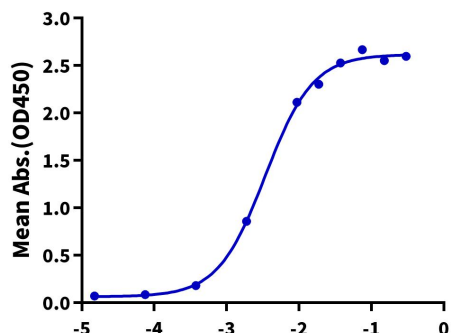
Cynomolgus/Rhesus macaque BAFFR on Bis-Tris PAGE under reduced condition. The purity is greater than 95%.

ELISA Data

Assay Data

Cynomolgus/Rhesus macaque BAFFR, His Tag ELISA

0.2µg Human BAFF (Trimer), hFc Tag Per Well



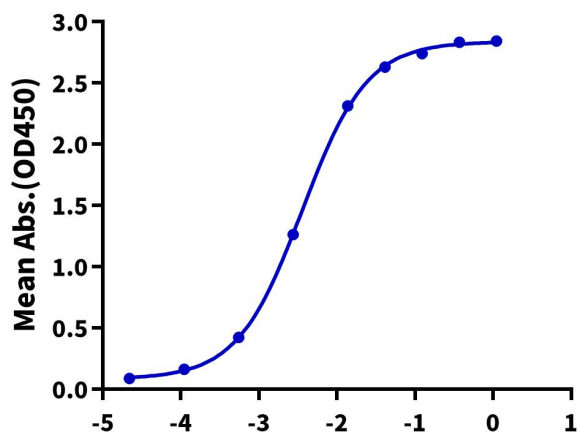
Immobilized Human BAFF (Trimer), hFc Tag at 2µg/ml (100µl/well) on the plate. Dose response curve for Cynomolgus/Rhesus macaque BAFFR, His Tag with the EC50 of 3.4ng/ml determined by ELISA (QC Test).

Log Cynomolgus/Rhesus macaque BAFFR, His Tag Conc.(µg/ml)

ELISA Data

Cynomolgus/Rhesus macaque, His Tag ELISA

0.1µg Cynomolgus/Rhesus macaque BAFFR, His Tag Per Well



Immobilized Cynomolgus/Rhesus macaque BAFFR, His Tag at 1µg/ml (100µl/Well) on plate. Dose response curve for Anti-BAFFR Antibody, hFc Tag with the EC50 of 3.6ng/ml determined by ELISA.

Log Anti-BAFFR Antibody, hFc Tag Conc.(µg/ml)